

# PLAZA ANTONIO

22351 Antonio Parkway | Rancho Santa Margarita

LINK  
TO  
VIDEO



FOR LEASING, PLEASE CONTACT:

800.353.7822

info@westar1.com

westarassociates.com

# PLAZA ANTONIO

## HIGHLIGHTS

- + A 170,000sf neighborhood shopping center
- + Located in the community of Rancho Santa Margarita, one of South Orange County's premier master planned communities and desirable shopping destinations
- + Excellent national and regional tenant mix
- + Services the neighboring communities of Portola Hills, Coto de Caza, Dove Canyon, Robinson Ranch, Las Flores, and Northern Mission Viejo with convenient access from Antonio Parkway & Highway 241

Join these major tenants at Plaza Antonio

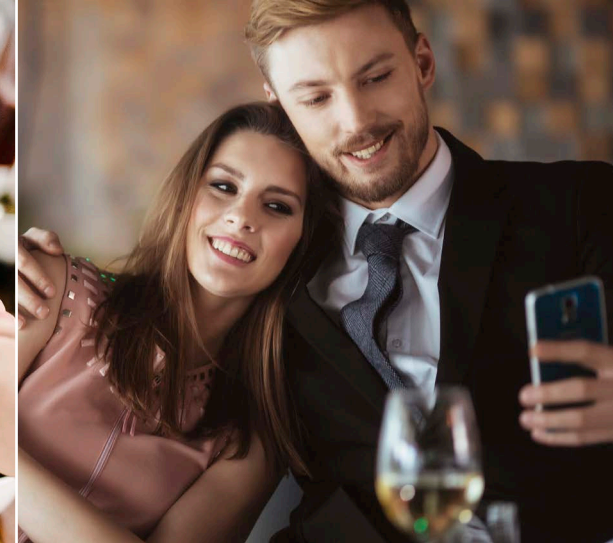


## TRAFFIC COUNTS (PLACER.AI)

- + ± 67,000 average cars per day on Antonio Parkway, La Promesa, & Alma Aldea
- + ± 61,000 customer visits per week

## 2024 DEMOGRAPHICS (COSTAR)

	1 Mile	3 Mile	5 Mile
Population:	16,309	66,810	155,131
Average Household Income:	\$129,095	\$171,046	\$164,594
Employee Population:	9,890	18,404	44,390



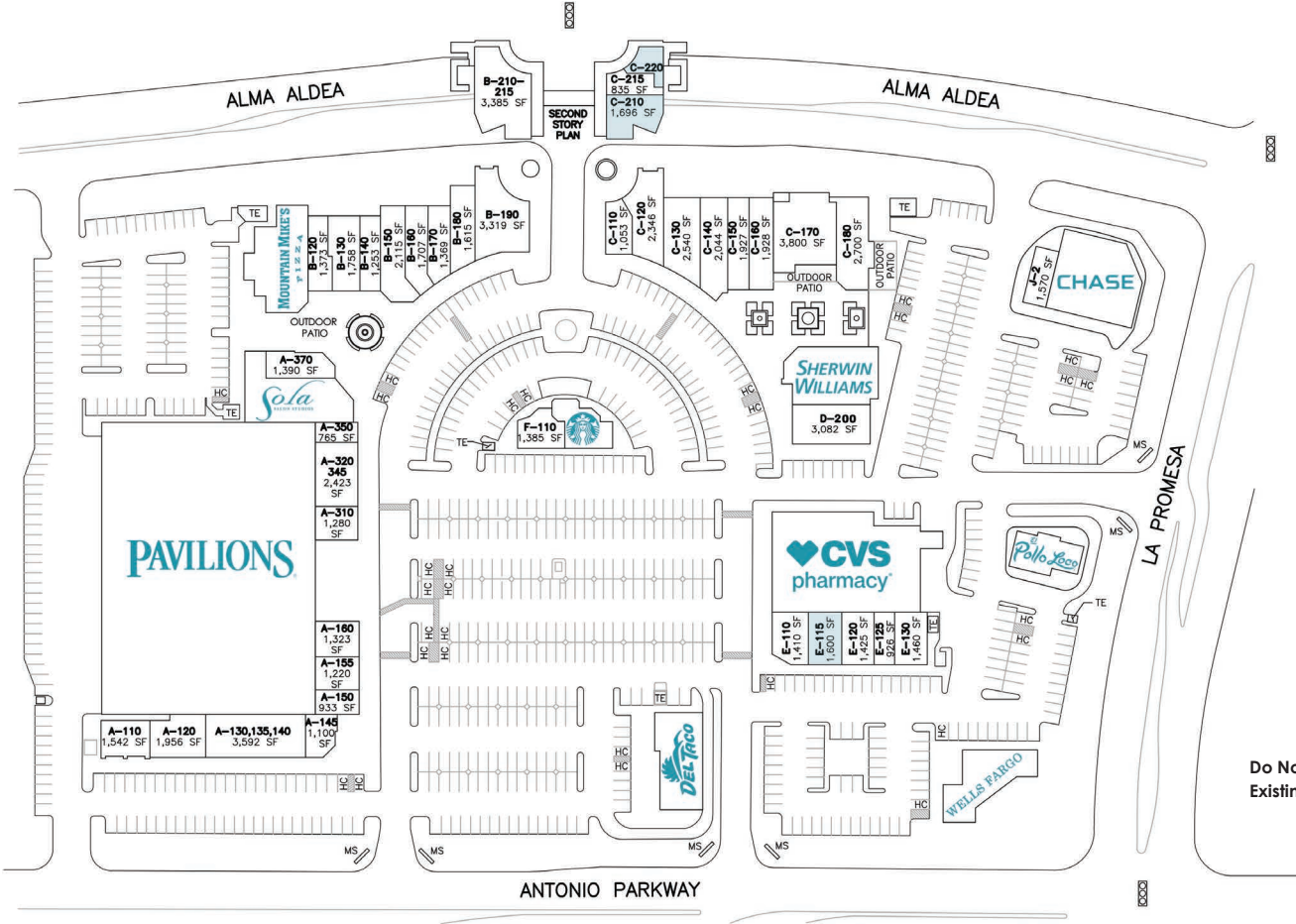
WELCOME TO  
RANCHO SANTA MARGARITA



22351 Antonio Parkway | Rancho Santa Margarita | 92688

**WESTAR ASSOCIATES**  
800.353.7822  
info@westar1.com  
westarassociates.com

# PLAZA ANTONIO



Figures are based on approximate square footages. Actual square footages may change in the final development. All buildings and improvements and the uses thereof shown on this plan, are subject to modification at any time at the owner's discretion without notice.



UNIT	TENANT	SQ. FT.
BLDG-A	Pavilions	57,000sf
E-140	CVS/pharmacy	12,586sf
PAD-G	Del Taco	3,513sf
PAD-H	Wells Fargo Bank	4,000sf
PAD-I	El Pollo Loco	2,250sf
A-110	Coto Cleaners	1,542sf
A-120	Antonio Animal Hospital	1,956sf
A-130,140	Marque Urgent Care	3,592sf
A-145	Baskin Robbins	1,100sf
A-150	Muskan Threading	933sf
A-155	Woof Gang Bakery & Grooming	1,220sf
A-160	AT&T Wireless	1,323sf
A-310	Belle Boutique	1,280sf
A-320,345	VIP Nail Salon	2,423sf
A-350	Hydration Room	765sf
A-370	La Fiesta Mexican	1,390sf
A-380	Sola Salon Studios	4,419sf
B-110	Mountain Mike's Pizza	4,642sf
B-120	Bonjour Ballet	1,373sf
B-130	New Lake Asian House	1,758sf
B-140	Mathnasium	1,253sf
B-150	Verizon	2,115sf
B-160	The UPS Store	1,707sf
B-170	Legends Salon	1,369sf
B-180	Cinnabon and Auntie Anne's	1,615sf
B-190	Forge Fitness	3,319sf
B-210,215	Sweatstar Yoga	3,385sf
C-110	H&R Block	1,053sf
C-120	Facial Aesthetic Concepts	2,346sf
C-130	Pro Nails and Hair	2,540sf
C-140	Bentley Flooring	2,044sf
C-150	United Self Defense Academy	1,927sf
C-160	Sake Sushi	1,928sf
C-170	Alza Italian Restaurant	3,800sf
C-180	Board & Brew	2,700sf
<b>C-210</b>	<b>AVAILABLE</b>	<b>1,696sf</b>
C-215	Pierson Chiropractic	835sf
<b>C-220</b>	<b>AVAILABLE</b>	<b>850sf</b>
D-100	Sherwin Williams	4,000sf
D-200	The NOW, A Massage Boutique	3,082sf
E-110	Bruegger's Bagels	1,410sf
<b>E-115</b>	<b>It's Boba Time (AVAILABLE)</b>	<b>1,600sf</b>
E-120	Nékter Juice Bar	1,425sf
E-125	Golden Spoon	926sf
E-130	Prima Pilates	1,460sf
F-100	Starbucks	1,810sf
F-110	Benjamin & Co. Fine Jewelry	1,385sf
J-1	Chase Bank	5,500sf
J-2	Elite Dentistry	1,570sf



22351 Antonio Parkway | Rancho Santa Margarita | 92688

WESTAR ASSOCIATES

800.353.7822

info@westar1.com

westarassociates.com

# PLAZA ANTONIO



22351 Antonio Parkway | Rancho Santa Margarita | 92688

WESTAR ASSOCIATES  
800.353.7822  
info@westar1.com  
westarassociates.com