

# PLAZA ANTONIO

22351 Antonio Parkway | Rancho Santa Margarita



FOR LEASING, PLEASE CONTACT:

800.353.7822

[info@westar1.com](mailto:info@westar1.com)

[westarassociates.com](http://westarassociates.com)

# PLAZA ANTONIO

## HIGHLIGHTS

- + A 170,000sf neighborhood shopping center
- + Located in the community of Rancho Santa Margarita, one of South Orange County's premier master planned communities and desirable shopping destinations
- + Excellent national and regional tenant mix
- + Services the neighboring communities of Portola Hills, Coto de Caza, Dove Canyon, Robinson Ranch, Las Flores, and Northern Mission Viejo with convenient access from Antonio Parkway & Highway 241

Join these major tenants at Plaza Antonio

PAVILIONS



CHASE



WELLS FARGO

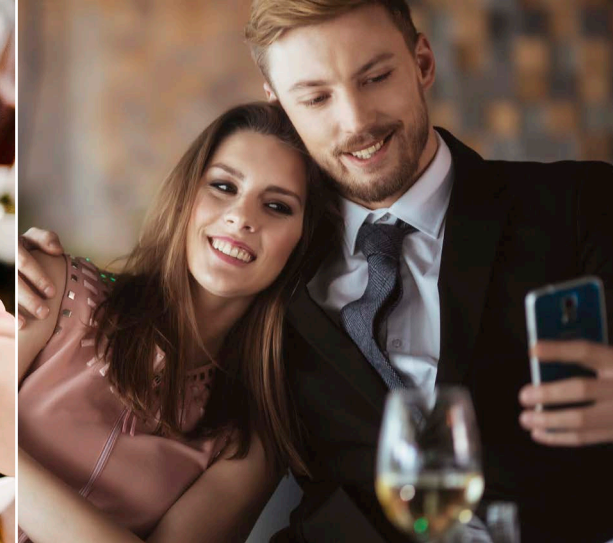


## TRAFFIC COUNTS (PLACER.AI)

- + ± 83,500 average cars per day on Antonio Parkway, La Promesa, & Alma Aldea
- + ± 61,000 customer visits per week

## 2023 DEMOGRAPHICS (COSTAR)

	1 Mile	3 Mile	5 Mile
<b>Population:</b>	16,937	69,731	160,016
<b>Average Household Income:</b>	\$122,588	\$168,535	\$161,139
<b>Employee Population:</b>	9,151	17,763	44,018



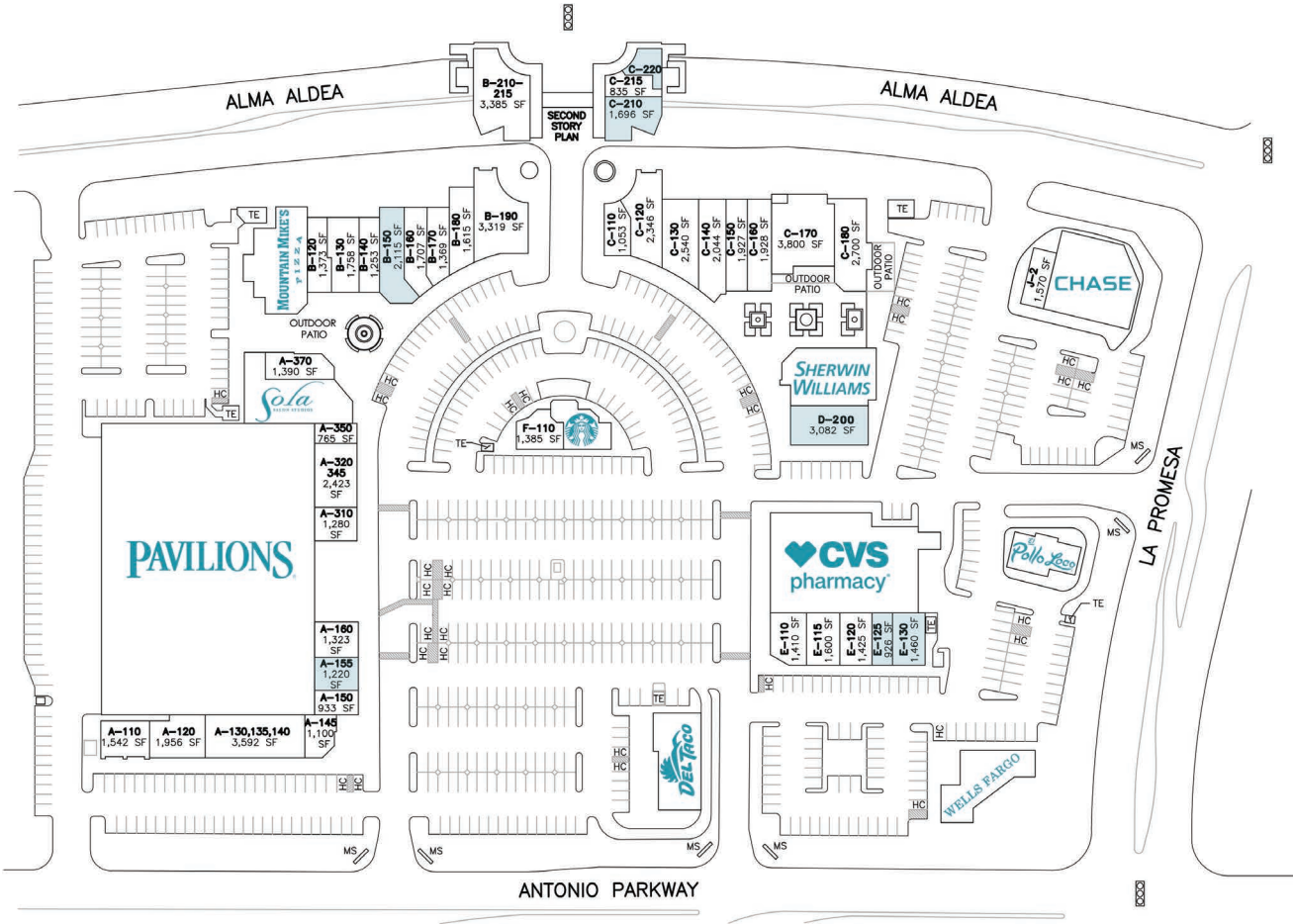
WELCOME TO  
RANCHO SANTA MARGARITA



22351 Antonio Parkway | Rancho Santa Margarita | 92688

**WESTAR ASSOCIATES**  
800.353.7822  
info@westar1.com  
westarassociates.com

# PLAZA ANTONIO



Figures are based on approximate square footages. Actual square footages may change in the final development. All buildings and improvements and the uses thereof shown on this plan, are subject to modification at any time at the owner's discretion without notice.

UNIT	TENANT	SQ. FT.
BLDG-A	Pavilions	57,000sf
E-140	CVS/pharmacy	12,586sf
PAD-G	Del Taco	3,513sf
PAD-H	Wells Fargo Bank	4,000sf
PAD-I	El Pollo Loco	2,250sf
A-110	Coto Cleaners	1,542sf
A-120	Antonio Animal Hospital	1,956sf
A-130,140	Marque Urgent Care	3,592sf
A-145	Baskin Robbins	1,100sf
A-150	Muskan Threading	933sf
<b>A-155</b>	<b>AVAILABLE</b>	<b>1,220sf</b>
A-160	AT&T Wireless	1,323sf
A-310	Belle Boutique	1,280sf
A-320,345	VIP Nail Salon	2,423sf
A-350	Hydration Room	765sf
A-370	La Fiesta Mexican	1,390sf
A-380	Sola Salon Studios	4,419sf
B-110	Mountain Mike's Pizza	4,642sf
B-120	Bonjour Ballet	1,373sf
B-130	New Lake Asian House	1,758sf
B-140	Mathnasium	1,253sf
<b>B-150</b>	<b>AVAILABLE</b>	<b>2,115sf</b>
B-160	The UPS Store	1,707sf
B-170	Legends Salon	1,369sf
B-180	Cinnabon and Auntie Anne's	1,615sf
B-190	Forge Fitness	3,319sf
B-210,215	Sweatstar Yoga	3,385sf
C-110	H&R Block	1,053sf
C-120	Facial Aesthetic Concepts	2,346sf
C-130	Pro Nails and Hair	2,540sf
C-140	Bentley Flooring	2,044sf
C-150	Dance Candy Fitness	1,927sf
C-160	Sake Sushi	1,928sf
C-170	Alza Italian Restaurant	3,800sf
C-180	Board & Brew	2,700sf
<b>C-210</b>	<b>AVAILABLE</b>	<b>1,696sf</b>
C-215	Pierson Chiropractic	835sf
<b>C-220</b>	<b>AVAILABLE</b>	<b>850sf</b>
D-100	Sherwin Williams	4,000sf
<b>D-200</b>	<b>AVAILABLE</b>	<b>3,082sf</b>
E-110	Bruegger's Bagels	1,410sf
E-115	It's Boba Time	1,600sf
E-120	Nékter Juice Bar	1,425sf
<b>E-125</b>	<b>AVAILABLE 6/1/24</b>	<b>926sf</b>
<b>E-130</b>	<b>AVAILABLE</b>	<b>1,460sf</b>
F-100	Starbucks	1,810sf
F-110	Benjamin & Co. Fine Jewelry	1,385sf
J-1	Chase Bank	5,500sf
J-2	Elite Dentistry	1,570sf



22351 Antonio Parkway | Rancho Santa Margarita | 92688

**WESTAR ASSOCIATES**

800.353.7822

info@westar1.com

westarassociates.com

# PLAZA ANTONIO



Ralphs RITE AID

Smart & Final.  
CVS pharmacy DOLLAR TREE

TRADER JOE'S Cinépolis LA CAPITAL DEL CINE  
TILLY'S Walgreens  
ULTA BEAUTY ROSS DRESS FOR LESS TARGET

SANTA MARGARITA HIGH SCHOOL

Walmart Neighborhood Market LOWE'S  
BIG LOTS! STAPLES PETSMART

KOHL'S  
BevMo! 24 FITNESS

PLAZA ANTONIO  
PAVILIONS CVS pharmacy

COTO DE CAZA

O'NEIL REGIONAL PARK



22351 Antonio Parkway | Rancho Santa Margarita | 92688

WESTAR ASSOCIATES  
800.353.7822  
info@westar1.com  
westarassociates.com