

# PLAZA ANTONIO

22351 Antonio Parkway | Rancho Santa Margarita



**FOR LEASING, PLEASE CONTACT:**  
800.353.7822  
info@westar1.com  
westarassociates.com

# PLAZA ANTONIO

## HIGHLIGHTS

- + A 170,000sf neighborhood shopping center
- + Located in the community of Rancho Santa Margarita, one of South Orange County's premier master planned communities and desirable shopping destinations
- + Excellent national and regional tenant mix
- + Services the neighboring communities of Portola Hills, Coto de Caza, Dove Canyon, Robinson Ranch, Las Flores, and Northern Mission Viejo with convenient access from Antonio Parkway & Highway 241

Join these major tenants in Plaza Antonio

PAVILIONS



CHASE



WELLS FARGO

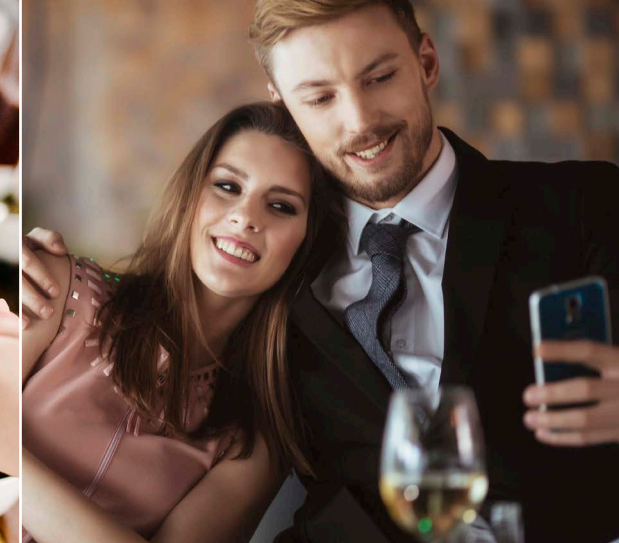


## TRAFFIC COUNTS (SITES USA)

- + 41,979 average cars per day on Antonio Parkway, La Promesa, & Alma Aldea

## 2019 DEMOGRAPHICS (SITES USA)

	1 Mile	3 Mile	5 Mile
<b>Population:</b>	15,636	72,853	163,274
<b>Average Household Income:</b>	\$102,279	\$160,031	\$155,529
<b>Daytime Population:</b>	12,666	35,398	75,550



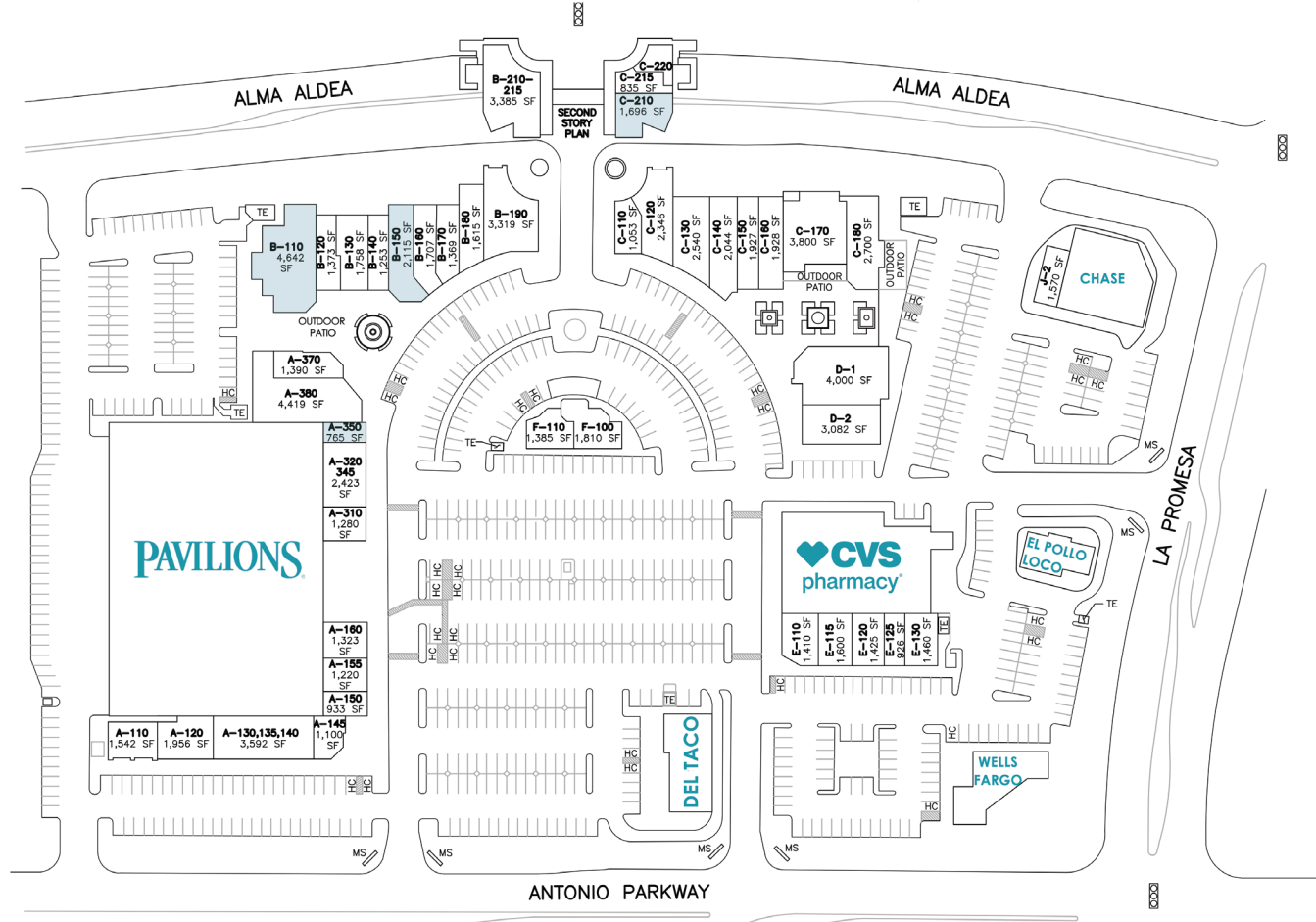
WELCOME TO  
RANCHO SANTA MARGARITA



22351 Antonio Parkway | Rancho Santa Margarita | 92688

**WESTAR ASSOCIATES**  
800.353.7822  
info@westar1.com  
westarassociates.com

# PLAZA ANTONIO



Figures are based on approximate square footages. Actual square footages may change in the final development. All buildings and improvements and the uses thereof shown on this plan, are subject to modification at any time at the owner's discretion without notice.



UNIT	TENANT	SQ. FT.
BLDG-A	Pavilions	57,000sf
E-140	CVS/pharmacy	12,586sf
PAD-G	Del Taco	3,513sf
PAD-H	Wells Fargo Bank	4,000sf
PAD-I	El Pollo Loco	2,250sf
A-110	Coto Cleaners	1,542sf
A-120	Antonio Animal Hospital	1,956sf
A-130-140	Marque Urgent Care	3,592sf
A-145	Baskin Robbins	1,100sf
A-150	Muskan Threading	933sf
A-155	T-Mobile	1,220sf
A-160	AT&T Wireless	1,323sf
A-310	Belle Boutique	1,280sf
A-320,345	VIP Nail Salon	2,423sf
<b>A-350</b>	<b>AVAILABLE (1/1/2020)</b>	<b>765sf</b>
A-370	La Fiesta Mexican	1,390sf
A-380	Sola Salon Studios	4,419sf
<b>B-110</b>	<b>AVAILABLE</b>	<b>4,642sf</b>
B-120	State Farm Insurance	1,373sf
B-130	Thai Jasmine Rice	1,758sf
B-140	Mathnasium	1,253sf
<b>B-150</b>	<b>AVAILABLE</b>	<b>2,115sf</b>
B-160	The UPS Store	1,707sf
B-170	Legends Salon	1,369sf
B-180	Olivia's Closet Boutique	1,615sf
B-190	Loco Cycle Studio	3,319sf
B-210,215	Sweatstar	3,385sf
C-110	H&R Block	1,053sf
C-120	Facial Aesthetic Concepts	2,346sf
C-130	Pro Hair And Nail Salon	2,540sf
C-140	Bentley Flooring	2,044sf
C-150	Pure Barre	1,927sf
C-160	Sake Sushi	1,928sf
C-170	The Parkway American Grill	3,800sf
C-180	Board & Brew	2,700sf
<b>C-210</b>	<b>AVAILABLE</b>	<b>1,696sf</b>
C-215	Pierson Chiropractic	835sf
C-220	OC Tan 2 U	850sf
D-100	Sherwin Williams	4,000sf
D-200	Orangetheory Fitness	3,082sf
E-110	Bruegger's Bagels	1,410sf
E-115	Yogurtland	1,600sf
E-120	Néκτηr Juice Bar	1,425sf
E-125	The Doughnut Parlor	926sf
E-130	18/8 Men's Salon	1,460sf
F-100	Starbucks	1,810sf
F-110	Benjamin & Co. Fine Jewelry	1,385sf
J-1	Chase Bank	5,500sf
J-2	Elite Dentistry	1,570sf



22351 Antonio Parkway | Rancho Santa Margarita | 92688

WESTAR ASSOCIATES

800.353.7822

info@westar1.com

westarassociates.com

# PLAZA ANTONIO



22351 Antonio Parkway | Rancho Santa Margarita | 92688

WESTAR ASSOCIATES  
800.353.7822  
info@westar1.com  
westarassociates.com